

Calico

INVERTED SPACES

Tear Sheets



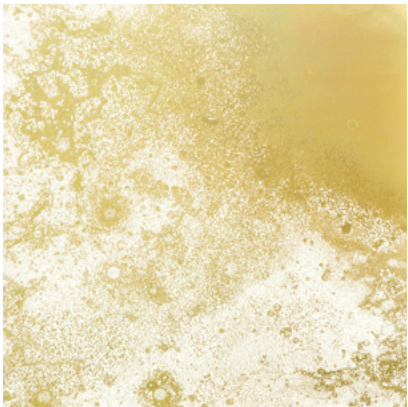
Inverted Spaces explores the beauty of the infinite expansion of the universe.



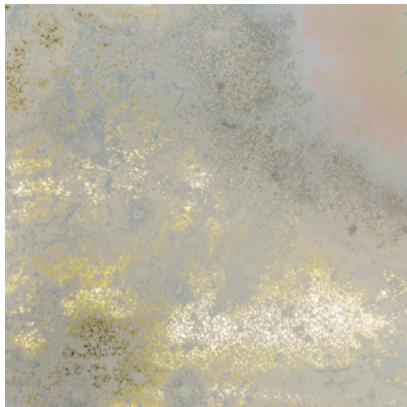
ANDROMEDA



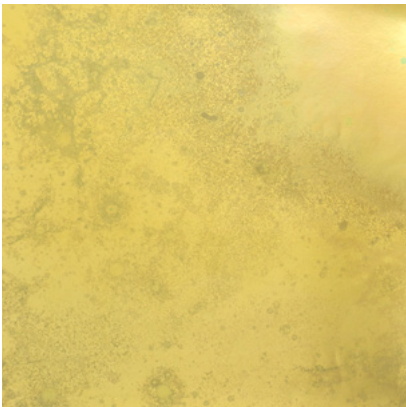
CASSIOPEIA



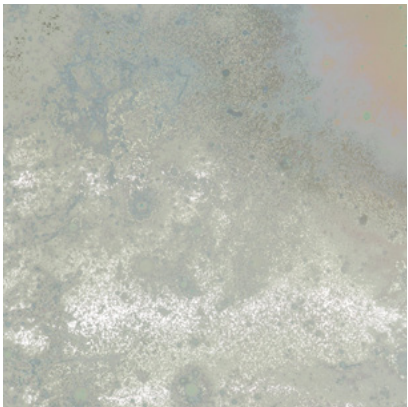
CORONA



ORION



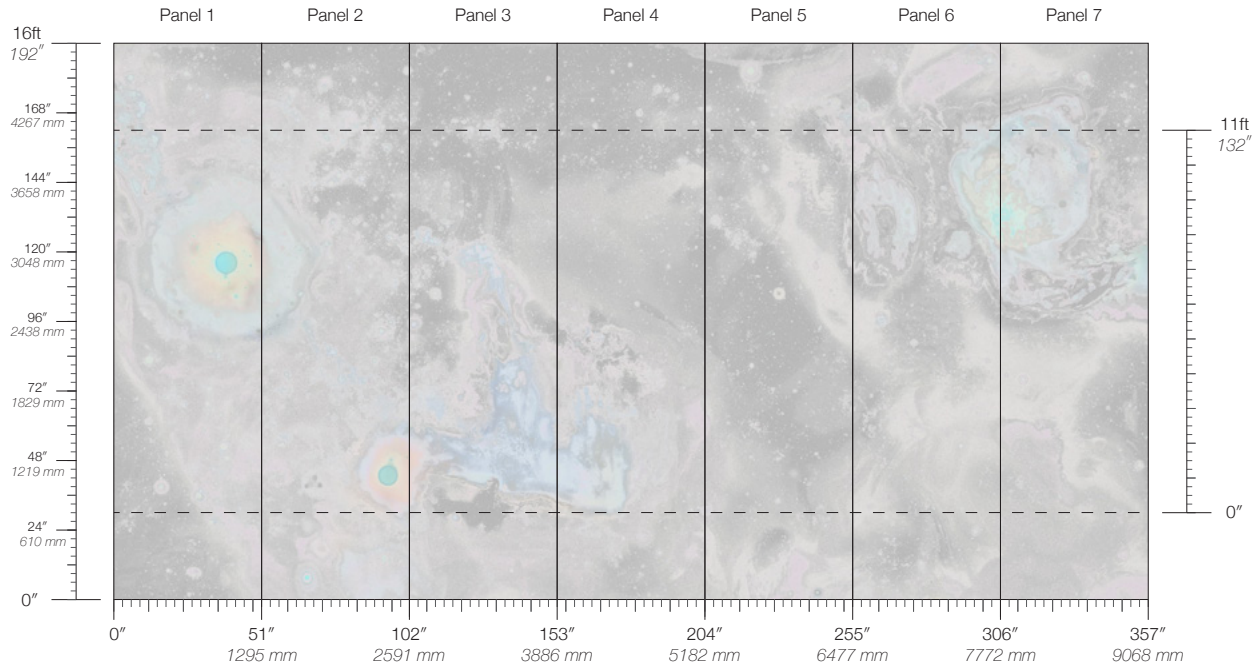
PHOENIX



URSA

Inverted Spaces Andromeda

Suitable for residential and commercial projects



COLOR

Andromeda

ITEM

1401

CONTENT

Type II Vinyl

PANEL WIDTH

51" / 1295 mm trimmed

PANEL HEIGHT

132" / 3353 mm standard
192" / 4877 mm extended

REPEAT

Non-repeating

STOCK

Made to order

LEAD TIME

4 weeks to print

MINIMUM

1 panel

PRICE

Available upon request

ORIGIN

USA

DETAILS

Custom options available

ENVIRONMENTAL

Recycled Content
Phthalate Free
Low VOC
HPD Available

SPECS

Commercial Vinyl face
Non-woven backing
20 oz per linear yard
620 g per linear meter
Smooth reflective metallic texture

TESTING

(US) ASTM E84 Adhered Class A
(EU) EN 15102 Class B, s2
(CN) CAN/ULC-S102.2 Class A
CCC-W-408D Type II
WA Specification W-101 Type II

MAINTENANCE

Water-based cleanser

CONTACT

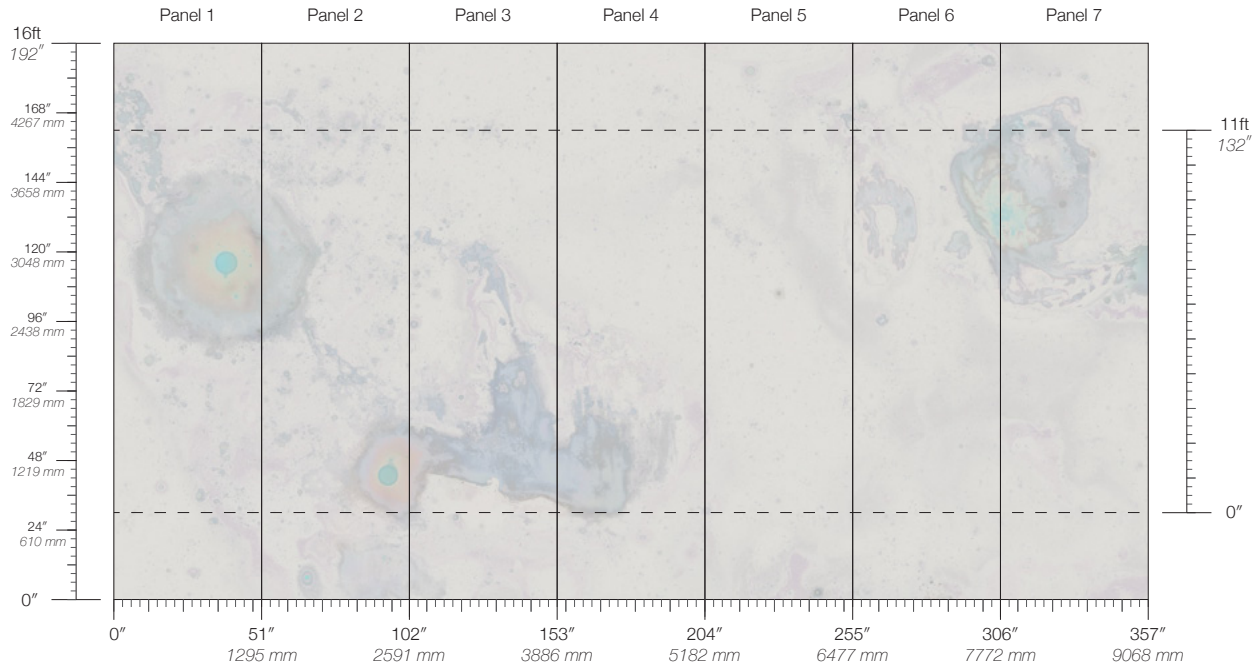
sales@calicowallpaper.com
+1 718 243 1705
57 Lispenard Street
New York, NY 10013 USA

DISCLAIMER

Refer to our website to see the full mural artwork. Reference the physical sample for color and texture. Panel maps represent mural artwork only.

Inverted Spaces Cassiopeia

Suitable for residential and commercial projects



COLOR

Cassiopeia

ITEM

1402

CONTENT

Type II Vinyl

PANEL WIDTH

51" / 1295 mm trimmed

PANEL HEIGHT

132" / 3353 mm standard
192" / 4877 mm extended

REPEAT

Non-repeating

STOCK

Made to order

LEAD TIME

4 weeks to print

MINIMUM

1 panel

PRICE

Available upon request

ORIGIN

USA

DETAILS

Custom options available

ENVIRONMENTAL

Recycled Content
Phthalate Free
Low VOC
HPD Available

SPECS

Commercial Vinyl face
Non-woven backing
20 oz per linear yard
620 g per linear meter
Smooth reflective metallic texture

TESTING

(US) ASTM E84 Adhered Class A
(EU) EN 15102 Class B, s2
(CN) CAN/ULC-S102.2 Class A
CCC-W-408D Type II
WA Specification W-101 Type II

MAINTENANCE

Water-based cleanser

CONTACT

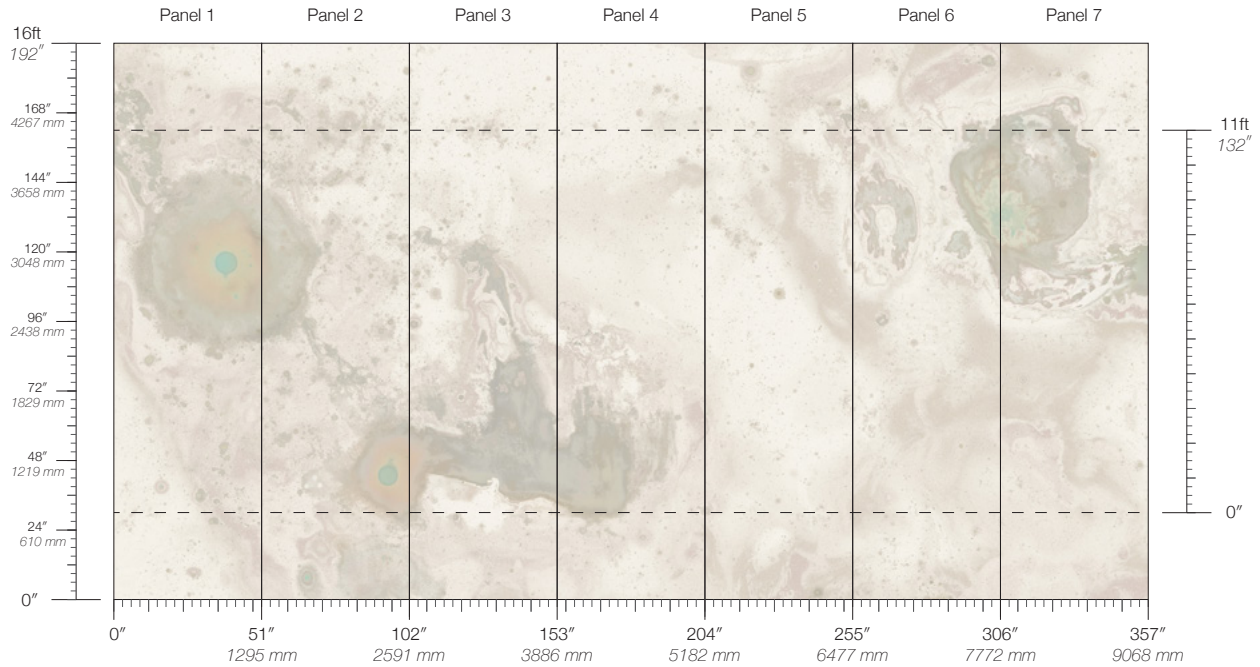
sales@calicowallpaper.com
+1 718 243 1705
57 Lispenard Street
New York, NY 10013 USA

DISCLAIMER

Refer to our website to see the full mural artwork. Reference the physical sample for color and texture. Panel maps represent mural artwork only.

Inverted Spaces Corona

Suitable for residential and commercial projects



COLOR
Corona

ITEM
1403

CONTENT
Type II Vinyl

PANEL WIDTH
51" / 1295 mm trimmed

PANEL HEIGHT
132" / 3353 mm standard
192" / 4877 mm extended

REPEAT
Non-repeating

STOCK
Made to order

LEAD TIME
4 weeks to print

MINIMUM
1 panel

PRICE
Available upon request

ORIGIN
USA

DETAILS
Custom options available

ENVIRONMENTAL
Recycled Content
Phthalate Free
Low VOC
HPD Available

SPECS
Commercial Vinyl face
Non-woven backing
20 oz per linear yard
620 g per linear meter
Smooth reflective metallic texture

TESTING
(US) ASTM E84 Adhered Class A
(EU) EN 15102 Class B, s2
(CN) CAN/ULC-S102.2 Class A
CCC-W-408D Type II
WA Specification W-101 Type II

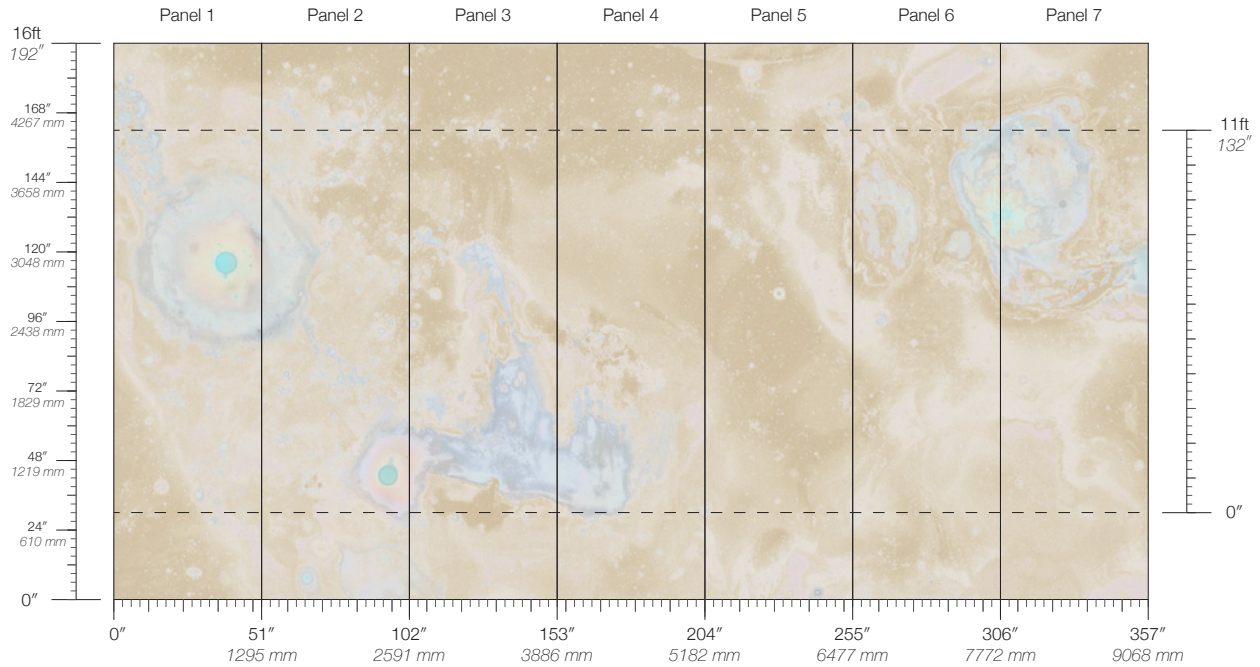
MAINTENANCE
Water-based cleanser

CONTACT
sales@calicowallpaper.com
+1 718 243 1705
57 Lispenard Street
New York, NY 10013 USA

DISCLAIMER
Refer to our website to see the full mural artwork. Reference the physical sample for color and texture. Panel maps represent mural artwork only.

Inverted Spaces Orion

Suitable for residential and commercial projects



COLOR
Orion

ITEM
1404

CONTENT
Type II Vinyl

PANEL WIDTH
51" / 1295 mm trimmed

PANEL HEIGHT
132" / 3353 mm standard
192" / 4877 mm extended

REPEAT
Non-repeating

STOCK
Made to order

LEAD TIME
4 weeks to print

MINIMUM
1 panel

PRICE
Available upon request

ORIGIN
USA

DETAILS
Custom options available

ENVIRONMENTAL
Recycled Content
Phthalate Free
Low VOC
HPD Available

SPECS
Commercial Vinyl face
Non-woven backing
20 oz per linear yard
620 g per linear meter
Smooth reflective metallic texture

TESTING
(US) ASTM E84 Adhered Class A
(EU) EN 15102 Class B, s2
(CN) CAN/ULC-S102.2 Class A
CCC-W-408D Type II
WA Specification W-101 Type II

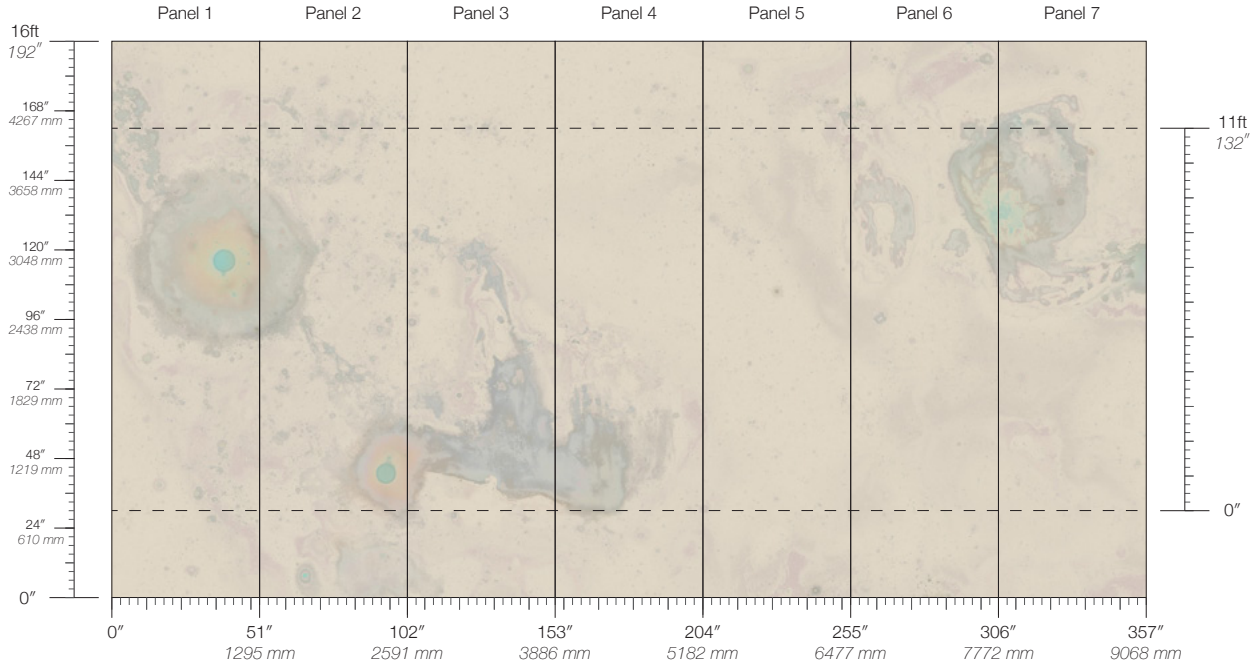
MAINTENANCE
Water-based cleanser

CONTACT
sales@calicowallpaper.com
+1 718 243 1705
57 Lispenard Street
New York, NY 10013 USA

DISCLAIMER
Refer to our website to see the full mural artwork. Reference the physical sample for color and texture. Panel maps represent mural artwork only.

Inverted Spaces Phoenix

Suitable for residential and commercial projects



COLOR
Phoenix

ITEM
1405

CONTENT
Type II Vinyl

PANEL WIDTH
51" / 1295 mm trimmed

PANEL HEIGHT
132" / 3353 mm standard
192" / 4877 mm extended

REPEAT
Non-repeating

STOCK
Made to order

LEAD TIME
4 weeks to print

MINIMUM
1 panel

PRICE
Available upon request

ORIGIN
USA

DETAILS
Custom options available

ENVIRONMENTAL
Recycled Content
Phthalate Free
Low VOC
HPD Available

SPECS
Commercial Vinyl face
Non-woven backing
20 oz per linear yard
620 g per linear meter
Smooth reflective metallic texture

TESTING
(US) ASTM E84 Adhered Class A
(EU) EN 15102 Class B, s2
(CN) CAN/ULC-S102.2 Class A
CCC-W-408D Type II
WA Specification W-101 Type II

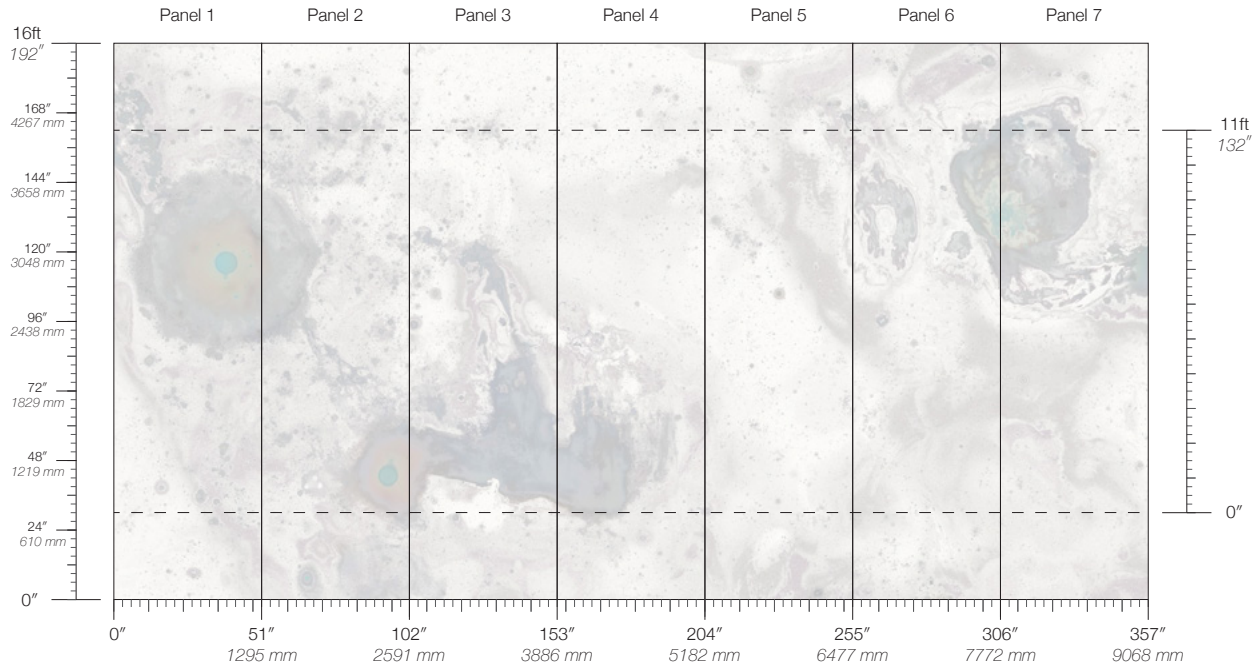
MAINTENANCE
Water-based cleanser

CONTACT
sales@calicowallpaper.com
+1 718 243 1705
57 Lispenard Street
New York, NY 10013 USA

DISCLAIMER
Refer to our website to see the full mural artwork. Reference the physical sample for color and texture. Panel maps represent mural artwork only.

Inverted Spaces Ursa

Suitable for residential and commercial projects



COLOR

Ursa

ITEM

1406

CONTENT

Type II Vinyl

PANEL WIDTH

51" / 1295 mm trimmed

PANEL HEIGHT

132" / 3353 mm standard
192" / 4877 mm extended

REPEAT

Non-repeating

STOCK

Made to order

LEAD TIME

4 weeks to print

MINIMUM

1 panel

PRICE

Available upon request

ORIGIN

USA

DETAILS

Custom options available

ENVIRONMENTAL

Recycled Content
Phthalate Free
Low VOC
HPD Available

SPECS

Commercial Vinyl face
Non-woven backing
20 oz per linear yard
620 g per linear meter
Smooth reflective metallic texture

TESTING

(US) ASTM E84 Adhered Class A
(EU) EN 15102 Class B, s2
(CN) CAN/ULC-S102.2 Class A
CCC-W-408D Type II
WA Specification W-101 Type II

MAINTENANCE

Water-based cleanser

CONTACT

sales@calicowallpaper.com
+1 718 243 1705
57 Lispenard Street
New York, NY 10013 USA

DISCLAIMER

Refer to our website to see the full mural artwork. Reference the physical sample for color and texture. Panel maps represent mural artwork only.